

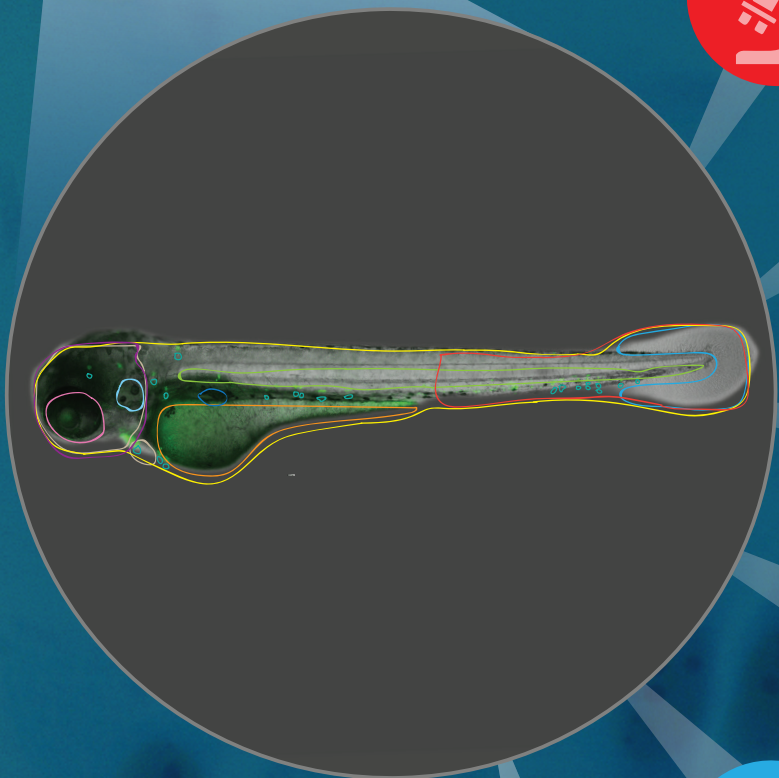


IDEA Bio-Medical Ltd.
Seeing Better

wiscan® HERMES for ZEBRAFISH

Zebrafish *In Vivo* Screening Empowered By Deep Learning
When HCS Meets A.I.

NEW



High Content Imaging



Artificial Intelligence -
Driven Analysis



Multiplexing
Fluorescence
& Brightfield



Parameter - Based
Classification



Time-lapse
& Z-Stack Imaging



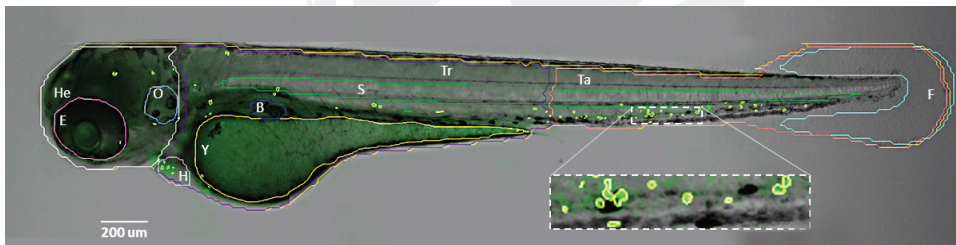
Automated
Quantitative Analysis

Revolutionary Deep Learning- Based Image Analysis For TRUE Zebrafish High-Content Screening

Zebrafish (*Danio rerio*) are an attractive model organism for the study of human disease pathology because of their optical transparency and genetic tractability. They serve as a great alternative to mammalian screening due to cost, throughput and reduced ethical concerns. Automated analysis of Zebrafish imposes unique demands due to the versatility of organs and features needed to be detected.

IDEA Bio-Medical is proud to present our unique dedicated imaging platform for automated data acquisition & analysis to quantify fluorescence, morphological changes & other features in Zebrafish larvae in a high throughput format.

Hermes for Zebrafish automatically quantifies area, fluorescence intensity, and count of whole fish and internal organelle properties, including eye, yolk, spine, tail, brain, internal granules and more.



Key Features:

- Image & analyze Label-free or fluorescently tagged fish and internal organelles
- Multiple levels of magnification available from 2X up to 60X with high NA
- Keep images in focus from head to tail with images acquired in single plane, Z stack and projections
- Novel artificial Intelligence-based algorithms for automated fish and organ-specific segmentation in brightfield
- Unbeatable throughput: Image 96 larvae within minutes
- Ensure proper fish orientation in post-analysis with customizable, software-based selection
- Statistical data calculated per fish and per organelle

Organs Identified Automatically or Manually

Morphological Features Extracted

Fish Outline	Bladder	Area
Yolk Sac	Heart	Count
Eye	Head	Fluorescence Intensity
Tail Fin	Trunk	Shape parameters
Spine	Tail	
Otic vesicle	Internal granules	
	User-definable region	

Worldwide headquarter

IDEA Bio-Medical Ltd.
2 Prof. Bergman St.
Rehovot, 76705, Israel
Phone: +972 732732 400
Fax: +972 89469 556
info@idea-bio.com

Asia - Pacific

Chen-Tech Challenge (HK) Limite
22/F Hing Yip Commercial CTR
280 Des Voeux Rd. Central, HK
Phone: +86 20 37651309
Maor-T@chen-tech.hk

USA

IDEA Bio-Medical Ltd.
5632 Van Nuys Blvd.
Suite # 411, Van Nuys
phone: 818-823-9763
info@idea-bio.com

