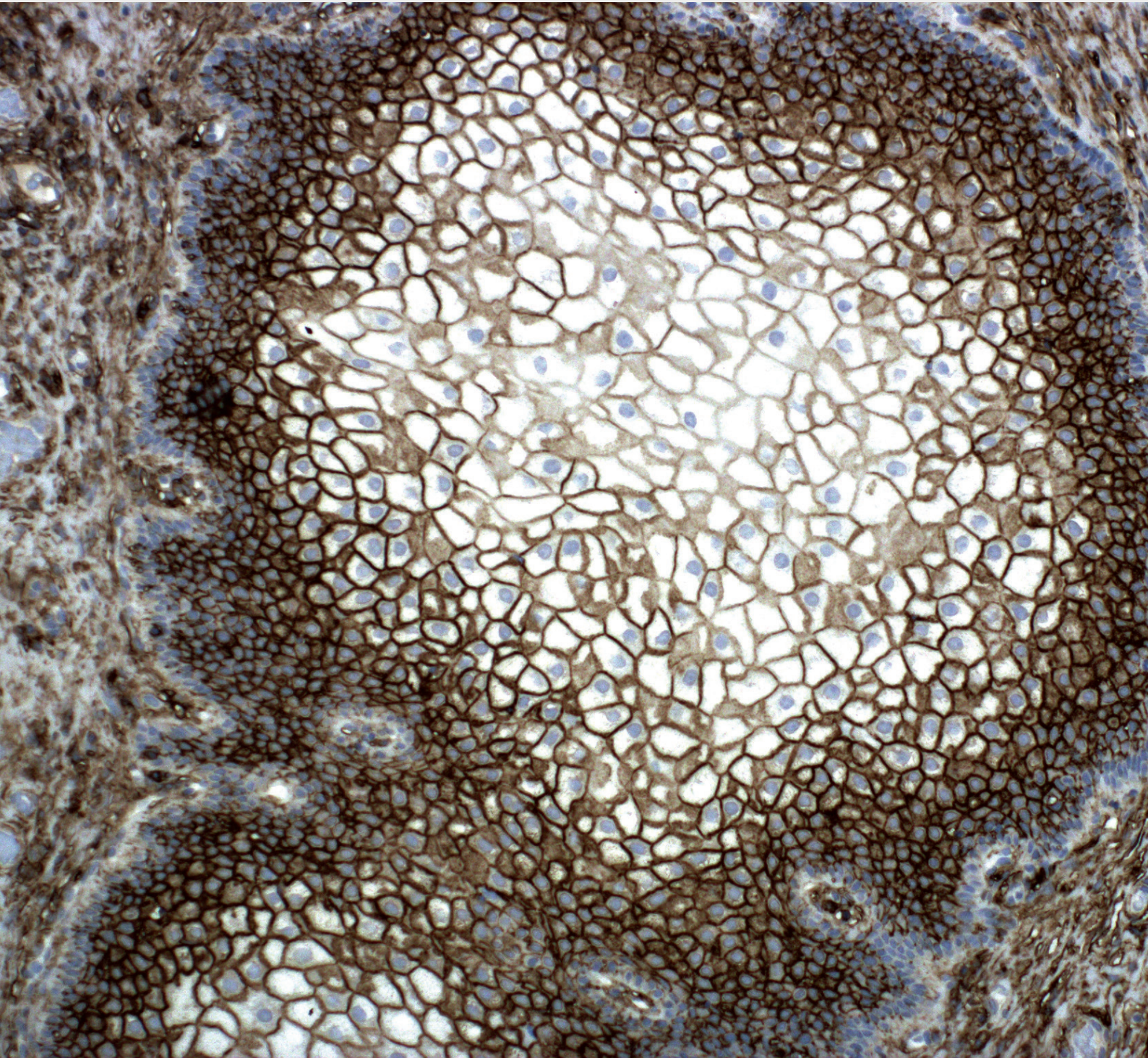




Neuroscience Antibodies for IHC



HIGH-QUALITY ANTIBODIES FOR NEURAL TARGETS

The Enzo portfolio of neuroscience antibodies includes hundreds of monoclonal and polyclonal antibodies validated for immunohistochemistry (IHC) or immunocytochemistry (ICC) protocols. Major targets include markers of neurodegenerative disease, ion channels, neurotransmitters and their receptors, neurofilament and cytoskeletal targets, synaptic vesicle markers, and more. Each of our antibodies is backed by our Worry-free Antibody Trial Program, www.enzolifesciences.com/abtrial.

NEURODEGENERATIVE MARKERS				
PRODUCT NAME	APPLICATION	Ab HOST	REACTIVITY	PRODUCT #
14-3-3, pAb	IHC, WB	Rabbit	+	BML-SA483
α -Synuclein (human), mAb (15G7)	IHC	Rat		ALX-804-258
α -Synuclein, pAb	IHC, WB	Rabbit		BML-SA3400
β -Amyloid (1-40), mAb (11A50-B10)	ELISA, IHC, WB	Mouse		ENZ-ABS116
β -Amyloid (rodent), pAb	IHC	Rabbit		ENZ-ABS197
Amyloid β , mAb (2C8)	ICC, IHC, WB	Mouse		ADI-NBA-104
APP, pAb	ICC, IHC, WB	Rabbit		ADI-NBA-102
APP, mAb (1G6) (Purified)	ELISA, IHC, WB	Mouse		ENZ-ABS128
APP, mAb (D3B10) (Purified)	ELISA, IHC, WB	Mouse		ENZ-ABS145
APP, mAb (LN27) (Purified)	WB, IHC	Mouse		ENZ-ABS126
BACE2 (NT), pAb	IHC, IP, WB	Rabbit		ADI-905-290
CD39 (human), mAb (AC2.5)	FC, IHC-FS, IP, WB	Mouse		ENZ-ABS233
CD39 (human), mAb (AC2.5) (biotin conjugate)	IHC, WB	Mouse		ENZ-ABS237
Clusterin (human), mAb (CLI-9)	ELISA, FC, IHC, WB	Mouse		ALX-804-126
EGR-2 Protein, pAb	IHC, WB	Rabbit	+	ENZ-ABS172
GSK-3 α / β , mAb (1H8)	ICC, IHC, IP, WB	Mouse	+	ADI-KAM-ST002
Huntingtin Interacting Protein-1, mAb (1B11)	ELISA, IHC, WB	Mouse		ADI-905-134
Laminin receptor (67kDa) (human), mAb (MLuC5)	IHC	Mouse		ALX-804-623
LRRK2 (human), pAb (AT106)	FC, IHC, IP	Rabbit		ALX-210-928
Matrix Gla protein, mAb (52.1#1)	IHC-PS, IP, WB, IF	Mouse		ENZ-ABS254
Presenilin 1, mAb (APS 11)	IHC, WB	Mouse	+	ALX-804-554
Prion Protein, mAb (3F4)	ELISA, IHC, IP, WB	Mouse	+	ENZ-ABS119
SOD-1 (Cu/Zn SOD), pAb	IHC, IP, WB, IF	Rabbit	+	ADI-SOD-100
Tau (human), pAb (TAUY9)	ELISA, IHC	Rabbit		BML-TA3119

NEUROPEPTIDES & NEUROPEPTIDE RECEPTORS				
PRODUCT NAME	APPLICATION	Ab HOST	REACTIVITY	PRODUCT #
Angiotensin II receptor AT ₁ , pAb	ICC, IHC, IP, WB	Rabbit		ADI-905-743
Angiotensin II receptor AT ₂ , pAb	ICC, IHC, IP, WB	Rabbit		ADI-905-746
Bradykinin receptor B ₁ , pAb	FC, ICC, IHC, WB	Rabbit		ADI-905-787
Bradykinin receptor B ₂ , pAb	ICC, IF, IHC, WB, EM	Rabbit		ADI-905-747
Calcitonin gene related peptide, pAb	IHC, WB	Sheep	+	BML-CA1137
Chromogranin A, pAb	ELISA, IHC-PS	Sheep		ENZ-ABS268
FMRFamide, pAb	IHC, WB	Rabbit	+	BML-FA1155
Gastrin releasing peptide, pAb	IHC, IP, WB	Rabbit	+	BML-GA1166
Leu enkephalin, pAb	IHC, WB	Rabbit	+	BML-EA1149
Met enkephalin, pAb	IHC, WB	Rabbit	+	BML-EA1150
Neuropeptide Y (human), mAb (8)	ELISA, IHC, WB	Mouse		BPD-ABS-028-08
Neurotensin, pAb	ELISA, IHC, WB	Rabbit	+	BML-NA1230
Orexin receptor 2, pAb	IHC	Rabbit		BML-SA647
Peptide YY, pAb	IHC, IP, WB	Rabbit	+	BML-PA1254
Vasoactive Intestinal (Poly)peptide, pAb	ELISA, IHC	Rabbit	+	BML-VA1285

Key: ELISA = Immunoassay; EM = Electron Microscopy; FC = Flow Cytometry; ICC = Immunocytochemistry; IF = Immunofluorescence; IP = Immunoprecipitation; WB = Western Blot

Legend: Human Mouse Rat Rabbit + Other

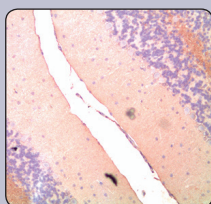
DETECT NEURAL MARKERS WITH HIGH-SPECIFICITY IHC ANTIBODIES

NEUROTRANSMITTERS, NEUROTRANSMITTER BIOSYNTHESIS & DEGRADATION				
PRODUCT NAME	APPLICATION	Ab HOST	REACTIVITY	PRODUCT #
Acetylcholinesterase, mAb (ZR3)	IHC, IP	Mouse	🐭 🐭 +	ALX-802-004
Aromatic L-amino acid decarboxylase, pAb	IHC, WB	Rabbit	🐰 🐰 🐰 +	BML-AZ1030
Dopamine, pAb	ELISA, IHC	Rabbit	🐰 🐰 🐰 +	BML-DA1140
Dopamine-β-hydroxylase, pAb	IHC, WB	Rabbit	🐰 🐰 🐰 +	BML-DZ1020
Histamine, pAb	ELISA, IHC	Rabbit	Species Independent	ENZ-ABS292
γ-Aminobutyric Acid (5A9), pAb	IHC, WB	Mouse	🐭 🐭 🐭 +	BML-GA1160
Glutamic Acid Decarboxylase, pAb	ELISA, IHC, WB	Rabbit	🐰 🐰 🐰 +	BML-GC3008
Phenylethanolamine N-methyltransferase, pAb	ICC, IHC, WB	Rabbit	🐰 🐰 🐰 +	BML-PZ1040
Serotonin, pAb	IHC	Rat	🐭 🐭 🐭 +	BML-SZ1011
Tyrosine hydroxylase, pAb	ELISA, IHC	Rabbit	🐰 🐰 🐰	BML-TZ1010

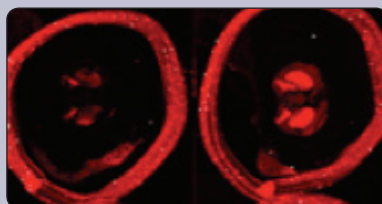
NEUROFILAMENTS & CYTOSKELETON				
PRODUCT NAME	APPLICATION	Ab HOST	REACTIVITY	PRODUCT #
[pSer8]GFAP, mAb (YC10)	ELISA, ICC, WB	Mouse	🐭 +	ADI-NBA-115
α Fodrin, mAb (AA6)	IHC, WB	Mouse	🐭 🐭 🐭 +	BML-FG6090
βIII-Tubulin (human), mAb (TU-20)	ELISA, FC, ICC, IHC, WB	Mouse	🐭	ALX-804-405
Neurofilament (human), M, mAb (SMI31) (Purified)	ELISA, ICC, IHC, WB	Mouse	🐭 +	ENZ-ABS215
Neurofilament H, mAb (SMI32) (Purified)	ELISA, ICC, IHC, WB	Mouse	+	ENZ-ABS219
Neurofilament (human), mAb (SMI32)	ELISA, ICC, IHC, WB	Mouse	+	ENZ-ABS220
Neurofilament (human), mAb (SMI38)	ELISA, ICC, IHC, WB	Mouse	+	ENZ-ABS221
Neurofilament M, pAb	IHC, WB	Rabbit	🐰 🐰 🐰 +	BML-NA1216
Neurofilament triplet proteins, mAb (13AA)	IHC, WB	Mouse	🐭 🐭 🐭 +	BML-NA1223

NEURAL GROWTH FACTORS				
PRODUCT NAME	APPLICATION	Ab HOST	REACTIVITY	PRODUCT #
Nestin (human), mAb (2C1 3B9)	ICC, IHC, WB	Mouse	🐭	ENZ-ABS109
Netrin-1, mAb (Nora-1)	IHC, WB	Mouse	🐭 🐭 +	ALX-804-838
Netrin-1, pAb (AT118)	FC, IHC, IP	Rabbit	🐰 🐰 +	ALX-210-943
PAX6, pAb	IHC, IF, WB	Rabbit	🐰 🐰	ENZ-ABS212
Tau (human), mAb (Tau 12)	ELISA, IHC, WB	Mouse	🐭	ENZ-ABS216
Tau (human), mAb (Tau C3)	ELISA, IHC, WB	Mouse	🐭	ENZ-ABS214
TRK receptor (human), mAb (MGR12)	IHC, WB	Mouse	🐭	ALX-804-575
Tyrosine Hydroxylase, pAb	ELISA, FC, ICC, IHC, IF, WB	Rabbit	Species Independent	ENZ-ABS191

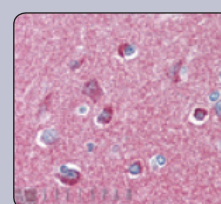
SYNAPTIC MARKERS				
PRODUCT NAME	APPLICATION	Ab HOST	REACTIVITY	PRODUCT #
α-Synuclein (human), mAb (LB509)	ELISA, IHC, WB	Mouse	🐭	ENZ-ABS218
Bassoon, mAb (SAP7F407)	ICC, IF, IHC, IP, WB	Mouse	🐭 🐭	ADI-VAM-PS003
SAP97, mAb (RPI 197.4)	ICC, IHC, IP, WB, EM	Mouse	🐭 🐭 🐭 +	ADI-VAM-PS005
SNAP α/β, mAb (6B7-3)	IHC, IP, WB	Mouse	🐭 🐭 🐭 +	ADI-VAM-SV027
Synaptophysin, mAb (SP15)	IHC, WB	Mouse	🐭 🐭 🐭 +	ADI-VAM-SV011
Synaptotagmin, mAb (ASV30)	IHC, WB	Mouse	🐭 🐭 🐭	ADI-SYA-130
Synaptotagmin, mAb (ASV48)	ICC, IHC, IP, WB	Mouse	🐭 🐭 +	ADI-SYA-148
VAMP2, pAb	ICC, IP, WB	Rabbit	🐰 🐰 🐰 🐰 +	ADI-VAS-SV006
Vesicular acetylcholine transporter, pAb	ELISA, IHC	Goat	🐐 🐐	BML-SA684



Immunohistochemistry analysis of mouse brain tissue (paraffin embedded) using Histamine, pAb. (Prod. No. ENZ-ABS292) at a dilution of 1:50.



IHC analysis of mouse brain sections untreated (left) or morphine-treated (right) stained with Opioid Receptor mu, pAb (Prod. No. ADI-905-744).



IHC analysis of human cortex stained with SNAP α/β, mAb (6B7-3) (Prod. No. ADI-VAM-SV027).

IONOTROPIC RECEPTORS				
PRODUCT NAME	APPLICATION	Ab HOST	REACTIVITY	PRODUCT #
AChR (α -7 Subunit), mAb (306)	WB, IF, IHC and IP	Mouse	👤 🐭 🐰 +	ENZ-ABS163
Adrenergic receptor β_2 , pAb	ICC, IF, IHC, IP, WB, EM	Rabbit	👤 🐭 🐰	ADI-905-742
Dopamine receptor D ₁ , pAb	IHC, IP, WB	Rabbit	🐰	ADI-905-789
Dopamine receptor D ₂ , pAb	ICC, IF, IHC, IP, WB, EM	Rabbit	👤 🐭 🐰	ADI-905-740
Dopamine transporter (extracellular loop), pAb	IHC, WB	Rabbit	👤 🐭 +	BML-SA509
GluR1 (extracellular), pAb	IHC, WB	Rabbit	🐭 🐰	BML-SA612
HERG1 (human), mAb (A12)	FC, ICC, IHC, IP	Mouse	👤	ALX-804-652
HERG1A (NT), pAb	ICC, IHC	Rabbit	🐭	ALX-215-050
HERG1B, pAb	ICC, IHC, WB	Rabbit	🐭	ALX-215-051
mGluR1 (extracellular), pAb	FC, ICC, WB	Rabbit	👤 🐭 🐰	BML-SA610
Na ⁺ /K ⁺ ATPase α 3 subunit, mAb (XVIF9-G10)	IHC, WB	Mouse	👤 🐰 🐭 +	BML-SA247
Nicotinic acetylcholine receptor, mAb (88B)	IHC, IP, WB	Mouse	🐭 🐰 +	ALX-802-002
NMDA receptor NR1 subunit (splice variant C2), pAb	IHC, WB	Rabbit	👤 🐭 🐰	BML-SA491
NMDA receptor NR2A subunit, pAb	IHC, IP, WB	Rabbit	👤 🐭 🐰	BML-SA425
NMDA receptor NR2B subunit, pAb	IHC, IP, WB	Rabbit	👤 🐭 🐰	BML-SA426
NMDA receptor NR2C subunit, pAb	IHC, IP, WB	Rabbit	👤 🐭 🐰	BML-SA488
PSD-95, mAb (6G6-1C9)	ICC, WB	Mouse	🐭 🐰 +	ADI-VAM-PS002
Purinergic receptor P2X4 (mouse), pAb	FC, ICC, IP	Rabbit	🐭	ALX-215-033
TRPV1, pAb	IHC, WB	Rabbit	👤 🐭 🐰	BML-SA564
TRPV4, pAb	IHC, WB	Rabbit	🐭 🐰	BML-SA565
TRPV5, pAb	IHC, WB	Rabbit	👤 🐰	BML-SA566
TRPV6 (human), pAb	IHC, WB	Rabbit	👤	BML-SA567

METABOTROPIC RECEPTORS				
PRODUCT NAME	APPLICATION	Ab HOST	REACTIVITY	PRODUCT #
A ₁ Adenosine receptor (rat), pAb	ICC, IHC, WB	Rabbit	🐰	BML-SA653
A _{2A} Adenosine receptor, pAb	IHC, WB	Rabbit	👤 🐭 🐰	BML-SA654
Cannabinoid receptor 1, pAb	FC, ICC, IHC, WB	Rabbit	👤 🐭 🐰 +	ALX-210-316
Cannabinoid receptor 2 (extracellular) (human), pAb	FC, IHC, WB	Rabbit	👤	BML-SA636
Muscarinic receptor M ₂ , pAb	IHC, WB	Rabbit	🐭 🐰	BML-SA581
Opioid receptor μ , pAb	ICC, IHC, IP, WB	Rabbit	👤 🐭 🐰	ADI-905-744
Opioid receptor δ , pAb	ICC, IHC, IP, WB	Rabbit	🐭 🐰	ADI-905-745
Opioid receptor κ , pAb	ELISA, ICC, IF, IHC, IP, WB	Rabbit	👤 🐭 🐰	ADI-905-799
Serotonin receptor 5HT _{1A} , pAb	ICC, IF, IHC, IP, WB, EM	Rabbit	👤 🐭 🐰	ADI-905-741



Global Headquarters
ENZO LIFE SCIENCES, INC.

10 Executive Blvd.
Farmingdale, NY 11735
Ph: 800.942.0430
Fax: 631.694.7501
info-usa@enzolifesciences.com

European Sales Office
ENZO LIFE SCIENCES (ELS) AG

Industriestrasse 17
CH-4415 Lausen, Switzerland
Ph: +41 61 926 8989
Fax: +41 61 926 8979
info-eu@enzolifesciences.com

For local distributors and detailed product information visit us online:
www.enzolifesciences.com

Put our experience to work for you!

Visit www.enzolifesciences.com/IHC to learn more about IHC detection reagents and antibodies.